



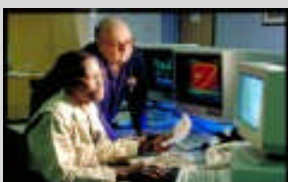
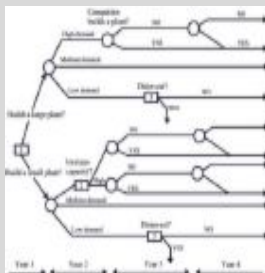
Project Management — International

Project Management with a Business Mindset — International

Project Management with a Business Mindset

The Office of Professional Development of the Project Executive Group is pleased to offer its **Project Management with a Business Mindset — International** through its Training Alliances.

Formerly the graduate-level Project Management course at Rice University's Jones Graduate School of Management — MBA and Executive MBA Programs, this course is offered outside of Rice University due to the retirement of its Professor, Paul Allen. Paul now brings it to the international community.



PROGRAM CONTENT

INTRODUCTION to the PMBOK*

Introduction of PMI PMBOK and APM PMBOK

PROJECT MANAGEMENT with a BUSINESS MINDSET

Modern Project Management | Integration of Organizational Strategy with Projects | Defining the Project | Developing a Network Plan | Managing Risk | Reducing Project Time Scheduling Resources | Organization | Leadership: Being an Effective Project Manager | Managing Project Teams Partnering: Managing Inter-organizational Relations Progress and Performance Measurement and Evaluation Project Audit and Closure | International Projects The Process of Project Management and the Future

INTRODUCTION to RISK-BASED DECISION-MAKING

Expected Value: The Cornerstone | Optimal Decision Policy Decision Trees | The Value of Information and Control Monte Carlo Simulation | Other Probabilistic Techniques Modeling Techniques | Judgments and Biases | Multi-Criteria Decisions | Stochastic Variances

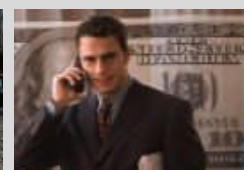
* *Project Management Body of Knowledge*

REGISTRATION & PAYMENT

Only through PEG Alliance Partners

Contact for Details

For more information, please contact:
P. Allen, pallen@projectexecutive.com



Project Executive Group, Inc.
A PEG International Alliance Offering
www.projectexecutive.com

10260 Westheimer, Suite 250
Houston, TX 77042 USA

Phone: 713-255-8350
Fax: 713-255-8300
E-mail: info@projectexecutive.com

Your Performance Multiplier